



## UMBC ALUMNI

Total Number of Alumni: 95,613

### Alumni by Decade:

1970s	6%
1980s	10%
1990s	18%
2000s	22%
2010s	29%
2020s	15%

Graduates of the Last Decade	32%
Undergraduate Degrees	85%
Graduate Degrees	20%
More Than One UMBC Degree	17%
UMBC at USG*	2%

### Alumni by Gender:

Female	52%
Male	48%
Non-binary	<1%

### Alumni by Race/Ethnicity:

White/Non-Hispanic	59%
Asian or Pacific Islander	19%
Black/African American	14%
Hispanic	3%
Native American	<1%
Other/Not Disclosed	4%

\* Studied at the Universities at Shady Grove (USG) campus in Rockville, MD.

## CONTACT INFORMATION

### UMBC Alumni Website

alumni.umbc.edu

### UMBC Website

umbc.edu

### UMBC News Website

news.umbc.edu

### UMBC Magazine

magazine.umbc.edu

### Support UMBC

giving.umbc.edu



### Facebook

facebook.com/UMBCAlumni



### LinkedIn

UMBC Alumni Network



### Flickr

flickr.com/umbcalumni



### Instagram

@UMBCAlumni



### X

@UMBC

UMBC Office of  
Alumni Engagement

Administration Building,

7th Floor

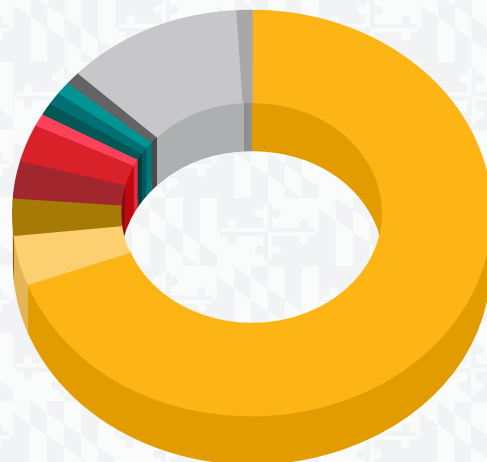
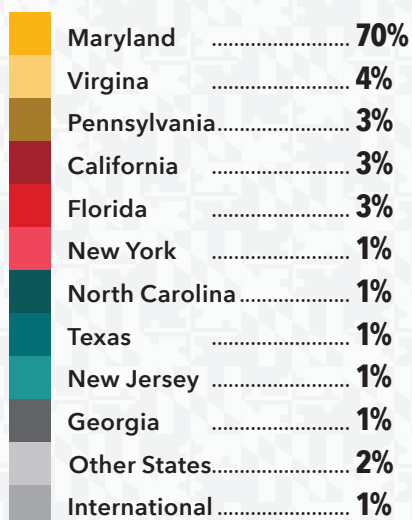
1000 Hilltop Circle

Baltimore, MD 21250

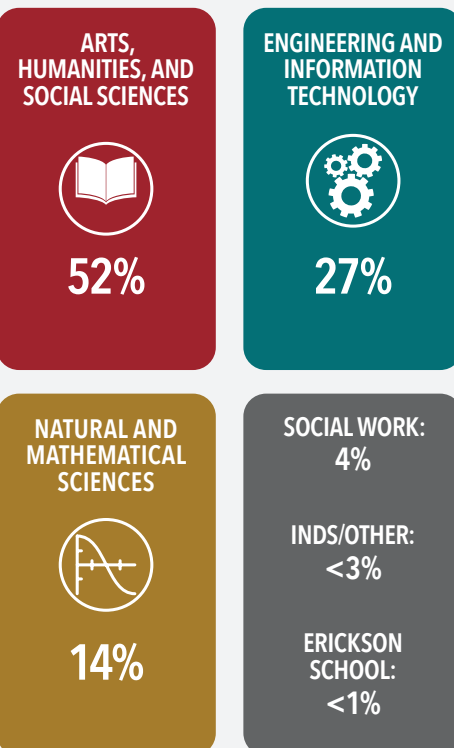
410-455-ALUM | alum@umbc.edu

## ALUMNI DEMOGRAPHICS

### Geographic Distribution



### Alumni by College/School/Program\*



\*Includes multiple degrees; based on college/school of first major.

## UMBC ALUMNI TOP EMPLOYERS



### Top 10 Degrees by Majors



Psychology	11%
Information Systems	9%
Biological Science	7%
Computer Science	7%
Social Work	4%
Sociology	4%
Economics	4%
Political Science	3%
History	3%
English	3%



## STUDENT DEMOGRAPHICS

### 2024 – 2025 Enrollment

Total enrollment: 13,906  
Undergraduate: 10,767  
Graduate: 3,139  
Full-time: 11,523  
Part-time: 2,625  
Male: 7,524  
Female: 6,382

### Undergraduate Enrollment by Race/Ethnicity:

White	28%
Asian or Pacific Islander	19%
Black/African American	20%
Hispanic	8%
Native American	<1%
International	18%
Other/Not Disclosed	7%

For more information on student demographics visit [about.umbc.edu](http://about.umbc.edu).

### 2024 - 2025 Tuition and Fees

Estimates based on full-time enrollment.

#### Undergraduate

MD resident undergrad (living on campus)	\$34,567
Non-resident undergrad (living on campus)	\$52,535

#### Graduate

MD resident graduate	\$45,786
Non-resident graduate	\$55,362

## ACADEMIC PROGRAMS

### Undergraduate

100+ majors and programs in the physical and biological sciences, social and behavioral sciences, engineering, mathematics, information technology, humanities, and visual and performing arts.

### Graduate

80+ degrees and certificate programs in engineering and information technology, humanities and arts, natural sciences and mathematics, social sciences and education, Erickson School of Aging Studies, accelerated programs, and services and academic integrity. 13 undergraduate and graduate programs are offered at the Universities at Shady Grove, located in Rockville, MD.



## GENERAL UMBC INFORMATION

### Faculty

Full-time: 865 | Part-time: 975

### Staff

Full-time: 1,424 | Part-time: 426

### Graduate Assistants: 912

### Alumni Employed by UMBC:

901 (including graduate Assistants)

UMBC's Facilities Management staff maintains 70 university buildings on 512 acres of grounds and provides service to nearly 3.7 million gross square feet of space.

## BWTECH@UMBC - RESEARCH AND TECHNOLOGY PARK

bwtech houses 120 organizations that employ nearly 1,900 employees and 170 UMBC student interns, and has generated \$700M in labor income and business sales. With access to state-of-the-art spaces, diverse UMBC research, expert mentorship, educational programming, and strong relationships with key industry resources, bwtech provides entrepreneurs in Maryland and around the world the space, people, tools, and resources they need to start, grow, and thrive.

## RETRIEVER ATHLETICS

UMBC has 17 NCAA, Division I teams

Baseball (M)  
Basketball (M, W)  
Cross Country (M, W)  
Indoor Track and Field (M, W)  
Lacrosse (M, W)  
Outdoor Track and Field (M, W)  
Soccer (M, W)  
Softball (W)  
Swimming and Diving (M, W)  
Volleyball (W)



Alumni demographic data was obtained from the UMBC alumni database as of August 30, 2024. This data excludes deceased, lost, and duplicate records.

Student and campus demographic data is current as of December 30, 2024, and was obtained from the Office of Institutional Research, Analysis & Decision Support, Office of Financial Aid, Division of Information Technology, and the Office of Human Resources.